

# VILLAGE SQUARE AT DELRAY BEACH

A REPLAT OF TRACT "B", A LIGHT INDUSTRIAL DEVELOPMENT FOR FRANZ / DELK / KINNAIRD

PLAT BOOK 63, PAGE 93

AND

A REPLAT OF A PORTION OF

LOT 19 AND LOT 27,

A SUBDIVISION OF SECTION 20, TOWNSHIP 46 SOUTH, RANGE 43 EAST

PLAT BOOK 1, PAGE 4 ALL OF THE PUBLIC RECORDS OF PALM BEACH COUNTY, FLORIDA

BEING IN SECTION 20, TOWNSHIP 46 SOUTH, RANGE 43 EAST,

CITY OF DELRAY BEACH, PALM BEACH COUNTY, FLORIDA

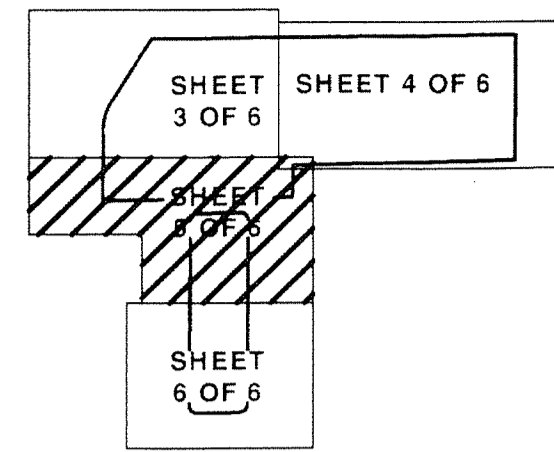
THIS INSTRUMENT WAS PREPARED BY  
DAVID P. LINDLEY, PLS  
OF  
**CAULFIELD and WHEELER, INC.**  
ENGINEERS - PLANNERS - SURVEYORS  
7900 GLADES ROAD, SUITE 100  
BOCA RATON, FLORIDA 33434 - (561)392-1991  
AUGUST - 2013

126

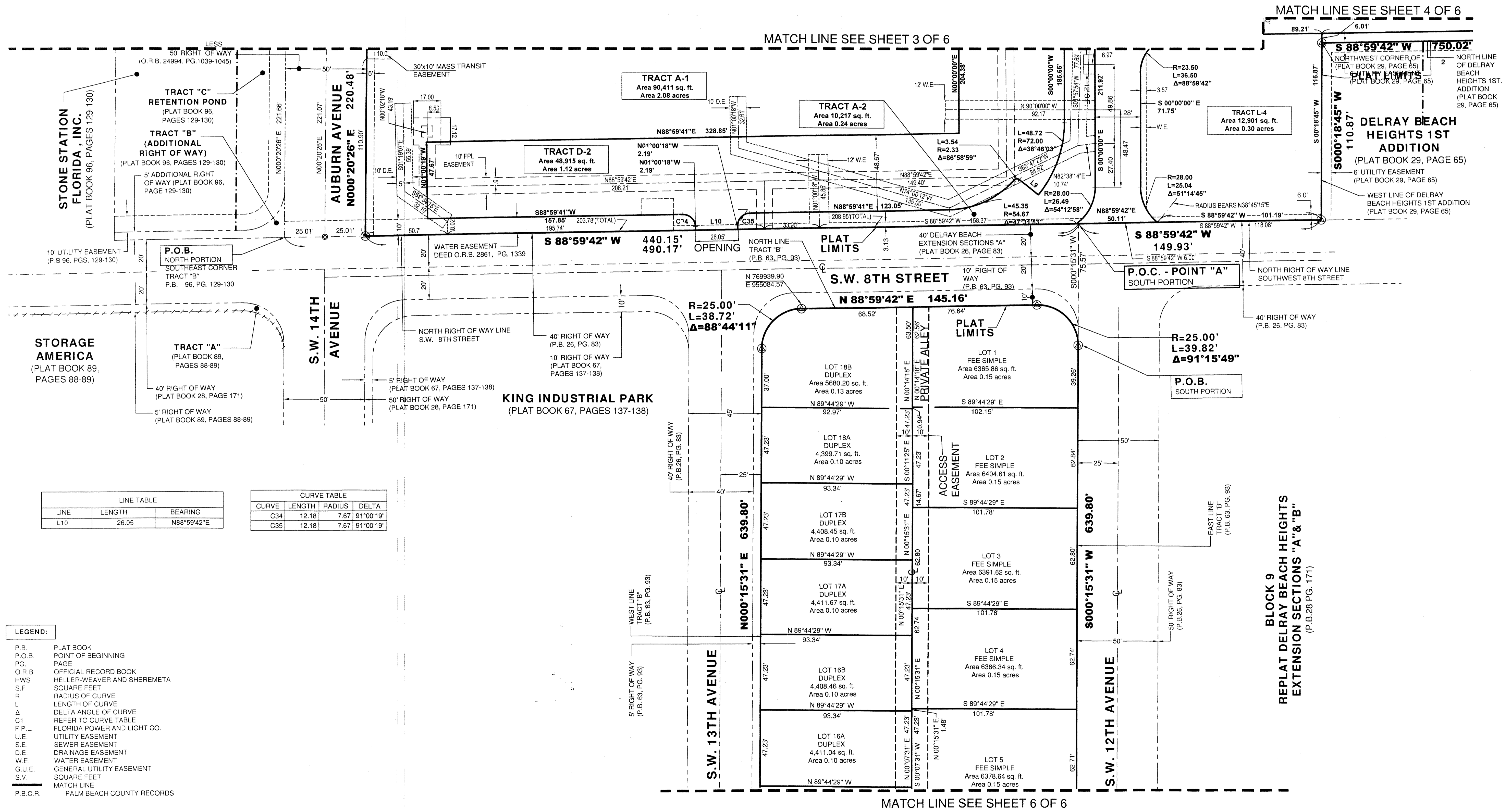
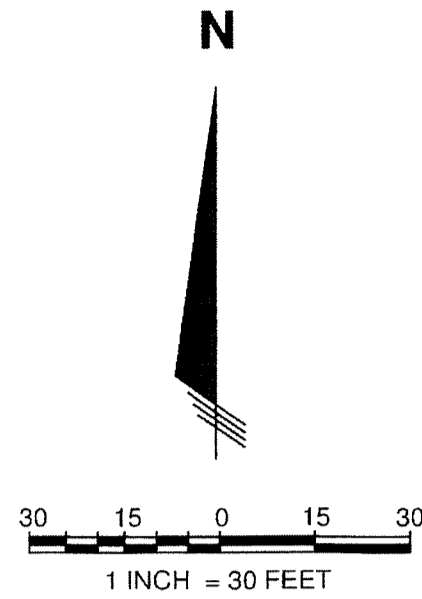
STATE OF FLORIDA  
COUNTY OF PALM BEACH  
THIS PLAT WAS FILED FOR  
RECORD AT \_\_\_\_\_ M.  
THIS \_\_\_\_\_ DAY OF \_\_\_\_\_  
A.D. 2013 AND DULY RECORDED  
IN PLAT BOOK \_\_\_\_\_ ON  
PAGES \_\_\_\_\_ THRU \_\_\_\_\_  
SHARON R. BOCK  
CLERK AND COMPTROLLER

BY: \_\_\_\_\_  
DEPUTY CLERK

SHEET 5 OF 6



KEY MAP  
NOT TO SCALE



MATCH LINE SEE SHEET 6 OF 6

MATCH LINE SEE SHEET 4 OF 6

MATCH LINE SEE SHEET 3 OF 6